



Right On Track

Postal Address PO Box 707 Morphett Vale 5162
Clubroom Phone no. (08) 8322 7047 if it is busy (we are on the net) then try 0415 821 517

Visit us on the internet at noarail.com

Inside this issue

Diary Notes	2
Exhibition News	3
Members' Photos	4 - 5
Other News	6

Send items for inclusion in this newsletter to the Editor via e-mail at admin@noarail.com
This newsletter is available as a download from our website (address above) saving the club postage and printing, most pictures are in colour. Notification is sent by email when it is available for download.

“Jimmy”, a lovely piece of modelling by Grahame Hall

Since the photos were taken Grahame has added some chain around the front bumper and chained the load down.



Management Committee

President	John Cutler
Vice President	Frank Crossley
Secretary	Graham Bartlett
Treasurer	Judith Morley
Membership Manager	David Morley
Events Coordinator & Security Officer	Tony Mikolaj
Almoner	Ron Weeden
First Aid	Peter Lynch

**Next Committee meeting
7:30pm Monday 3rd March 2008**

Card Table Swap

**Friday 15th February
7:30 pm – 9:00 pm
NMRI Clubrooms**

Not many spaces left so make your move or miss out. \$10 per table on the day if there is space or take advantage of the early bird discount, \$5 if paid in advance. Strictly one person entry per table.

Mount Compass Display

**Sunday 6th April
10:00 am – 4:00 pm
Mount Compass Oval**

Now confirmed, please put your name on the list for helpers on the noticeboard.

Southern Craft Fair

**Sunday 27th April?
10:00 am – 4:00 pm
Morphett Vale Stadium**

This is only a guess at the moment just to let you earmark your diary

AMRE Exhibition

**7th – 9th June
9:30 am – 5:00 pm Saturday and Sunday
9:30 am – 4:00 pm Monday
Greyhound Park**

We are not displaying at this event as Paradigm will be on display at Ballarat.

Ballarat Exhibition

**7th – 9th June 2008
10:00 am – 5:00 pm Saturday and Sunday
10:00 am – 4:00 pm Monday
Eastwood St Leisure Centre, Ballarat**

We will be taking Paradigm to this event. Hopefully the semaphores will be to a stage where we can have some working for this weekend, no promises but we can try. There is a list on the noticeboard for members to show their interest, please tick the box or add you name if it is not already there.

Stawell Exhibition

**12th - 13th July I think
9:00 am– 6:00 pm Saturday
9:00 am– 4:00 pm Sunday
SES Hall – Sloane St Stawell Vic**

I hope to have more information for this event by next edition.

Swapmeet and Clubrooms Open Day

**Sunday 27th July
10:00 am – 1:00 pm
NMRI Clubrooms**

We will be running this as a combined swapmeet and open day with the intention of cross promoting to increase attendance. Please note the new times. Table numbers will be limited by available space. Prices per table to be advised, early bird discounts will apply. Maximum two people entry per table.

Our Exhibition 2008

**11th – 12th October
9:30 am – 5:00 pm Saturday
9:30 am – 4:00 pm Sunday
Mitsubishi Entertainment Centre
1284 South Road Clovelly Park SA 5042
\$3 Kids \$6 Adults \$15 Families**

Swapmeet

**Friday 7th November
7:30 pm – 9:00 pm
NMRI Clubrooms**

October Exhibition

It is now less than eight months away so things are starting to heat up on the organising front. I have sent invites via email and snail mail to 47 layouts, clubs and displays and 21 traders both local and interstate, allowing for about 40% of these to not be available that will still leave us with more than we can handle. Once again we are using both paper forms and our popular online application program. Many of those invited are new, or new to us, so following our overall plan there should be a noticeable variety from previous years. Judging by the speed of replies coming in we will be crammed to the rafters. The local model shops all sound very positive and will be supporting us.

Mitsubishi has spent many dollars improving the facilities of the venue and so the hire setup has also changed, we are booked in and I am currently sorting some of the fine details for access to the new audio/visual system. The ceasing of production at Mitsubishi may interfere with our booking and I will investigate this next week and also be looking at plan "B" if necessary.

Swindle

We will be running our Saturday night meal and swindle; I am investigating the possibility of having ISS cater this for us to ease the load on ourselves. Some quite good prizes have been donated for the swindle, thanks to those who have chipped in already, we still need more, especially railway related items so keep your eyes open for any opportunity to get businesses on our side.

Colouring competition

We will be running our popular colouring competition again so will need some prizes for it too.

Advertising

Fliers are being prepared and should be in the model shops etc. soon, if you know anywhere else that we can distribute them please let me know. I will contact the local TV and radio stations in the coming months to get the exhibition on their community listings and to try to get some time on air. We will use our well known advertising signs closer to the date as they seem to work very well according to our research. These will be spread around the suburbs to get the maximum penetration for our money. If on your travels you see a fence or suitable position to place a sign let me know so that we can let all of Adelaide in on the best model railway exhibition.

Helpers

As per usual we will need lots of helpers. The Team Leader system will be used again as this lets us break the workload into smaller chunks so making it easier for everyone. If you would like a team leader job then speak to me and I will slot you in, this is not an exclusive group, it's just that the same hands seem to go up each time. If you do not want to lead then help by getting behind those who do, all the jobs are important to run a great exhibition. Some of the teams and their job functions are:

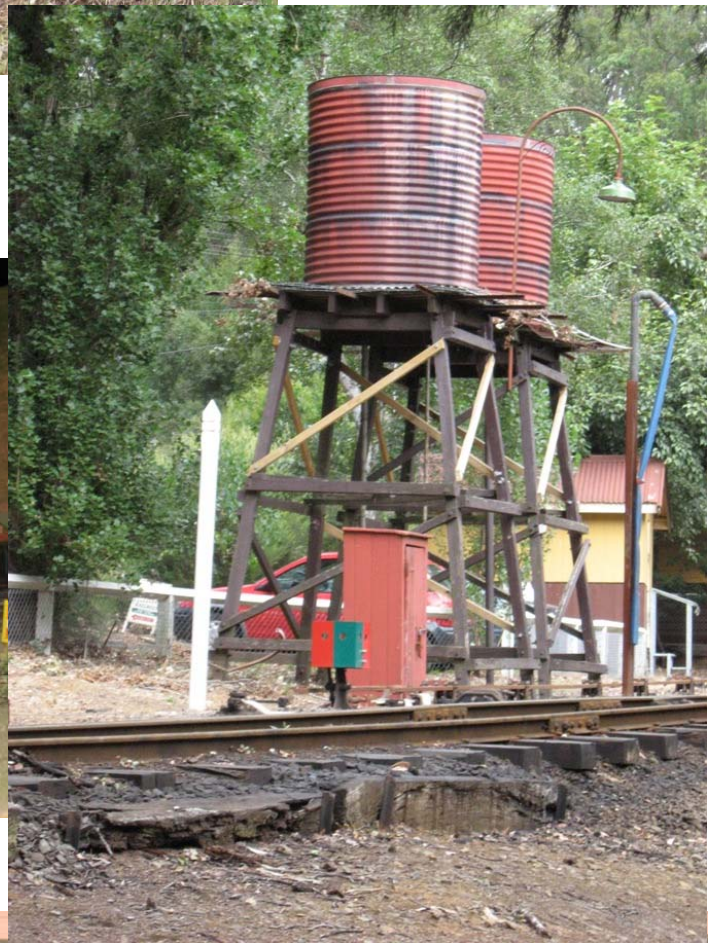
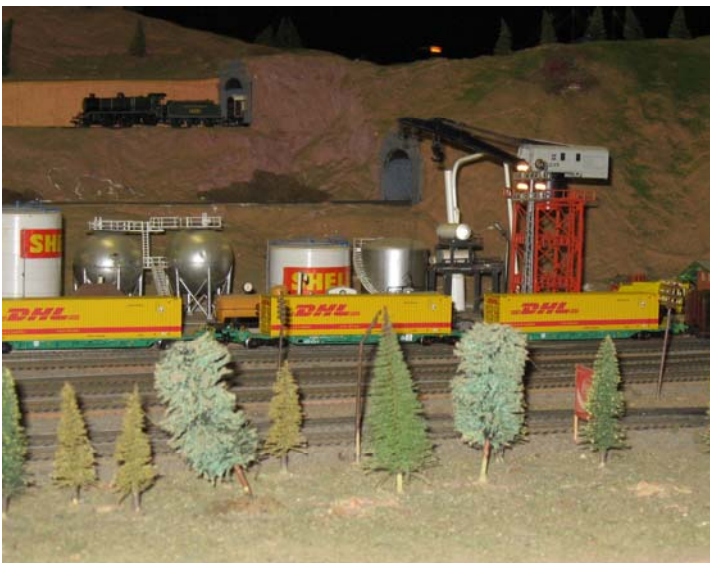
Advertising	- promote the event using signs, fliers, newspapers, radio, TV, internet etc.
Canteen	- sell cake, chocolates, hot and cold drinks, etc.
Door	- collect entrance money, hand out guides, fliers, etc. and general info point
Sausage Sizzle	- cook and sell sausages and sell cold drinks
Security	- ensure a safe environment for all concerned
Swindle	- organize prizes, tickets, silent auctions etc.
Venue	- mark out positions of exhibitors and traders, organize supply of power

A helper list is on the notice board please tick the appropriate boxes so the good feeling of doing your bit and helping out can be shared equally. Remember club membership does not automatically get you free entry, helping does.

Event Coordinator... Tony Mikolaj



Vivien sent in these photos that she took with her new camera while visiting Puffing Billy



End Of The Line Hobbies

Your One Stop Hobby Shop

End Of The Line Hobbies is offering club members a 5% discount off all purchases. To be eligible you must be a current financial member and mention your club membership at the time of purchase. The club will receive the same amount as a voucher for use as we see fit. So you can help yourself and the club at the same time.

Delivery can be arranged anywhere in the world and orders may be placed in person at the shop, via e-mail, snail mail, phone or fax. There is a stock hold option and payments can be made by Visa Card, Master Card, EFTPOS and good old fashioned cash!

Wednesday – Sunday 10:00 am – 4:30 pm

End Of The Line Hobbies 74 Ocean Street Victor Harbor SA 5211(near the turntable)

Ph 8552 7900

Find us at

www.endofthelinehobbies.com.au

Fax 8552 7933

Email

shop@endofthelinehobbies.com.au



A couple more photographs of “Jimmy” from Grahame.

Do you have some photos of your latest pride and joy? There is always space in this newsletter or ask for an album on our website. Even though Aaron is trying to fill it up with his 800 or so files and photos, we are currently only using a small percentage of our allotted space and still have gigabytes of room for your use.



Vale

The club expresses deep sympathy to Frank on the loss of his mother, Fran on Monday night. Members present on Tuesday night signed a sympathy card.

Exhibitions

If you read page 2 you would already know that the Mt Compass School Fair display is now confirmed as 6th April

The Committee has decided that the club will attend the Ballarat exhibition on the June long weekend.

We also have an invite for August to Woodend which is just this side of Melbourne; this will be discussed by the committee once we have some details.

There is a list on the noticeboard for members to show their interest for all these events, please tick the box(s) or add you name if it is not already there. Please fill it out ASAP

Late Night Run

That got your attention didn't it? Saturday 15th March has been declared a working bee, ie. no running; there are heaps of little jobs that require your assistance. Afterwards there will be one of our usual late night runs.

Visitors

Members are reminded that for security reasons all non members must also be signed in when they visit, even if it is for just a short time, this can be done on the bottom of the member sign in sheet.

New Members

Two recent membership approvals by the committee are Paul Arman and Lois Haccou. Please make them feel welcome and a part of our club.

Club Shop

This is now operational with a small range of stock including, but not limited to, Kadec couplers, screws, drills, and other various spare parts, other items will be added in the near future. See John Carli for a complete list and pricing.

Opening Times

The clubrooms are open

Tuesdays from 7:30 pm – 9:00 pm

Saturdays from 2:00 pm – 6:00 pm

Thursdays from 2:00 pm – 5:00 pm

A key holder may offer to stay back late on a Saturday night and an evening meal may be decided on, but members are requested to clean up after.

Swindle Prizes

Yes, it is still 8 months away but these things come around fast, so members are asked to once again dig out items suitable as swindle prizes at our exhibition next October. I have seen some items arriving so thank you to the donors of them.

We also would like some people to volunteer to make some cakes etc for sale through the canteen and for use in the exhibitor lounge.

Sausage Sizzle

Thank you to those that have volunteered to join the ranks. Once they are trained it will be just a few hours every fourth week.

Phone

The phone at the clubrooms is primarily for club business; members may use it for private calls but please remember to also drop some money in the box next to the phone to help with the bill.

Swapmeets

15 folding tables and two large shelters are now in our possession so we are close to being ready for the next development of combining an open day with the July swapmeet. The start and finish times for the daytime swapmeets will be set back one hour and run from 10 am – 1 pm to help us cash in on the lunchtime trade at the sausage sizzle.

On this day we will require extra helpers to escort the public around explaining about the club and member benefits and some to operate the main layout. Have a look on the noticeboard for the usual list for volunteers to help at the swapmeets this year